

GE Washer Fix – Random beeps, Power button wont work. Start button sometimes works.

GE Washer model: GTW680BSJ6WS3

Problem: Power button won't work. Start button intermittently works. If washer does operate, will get random beeps.

Solution: Replace control board.

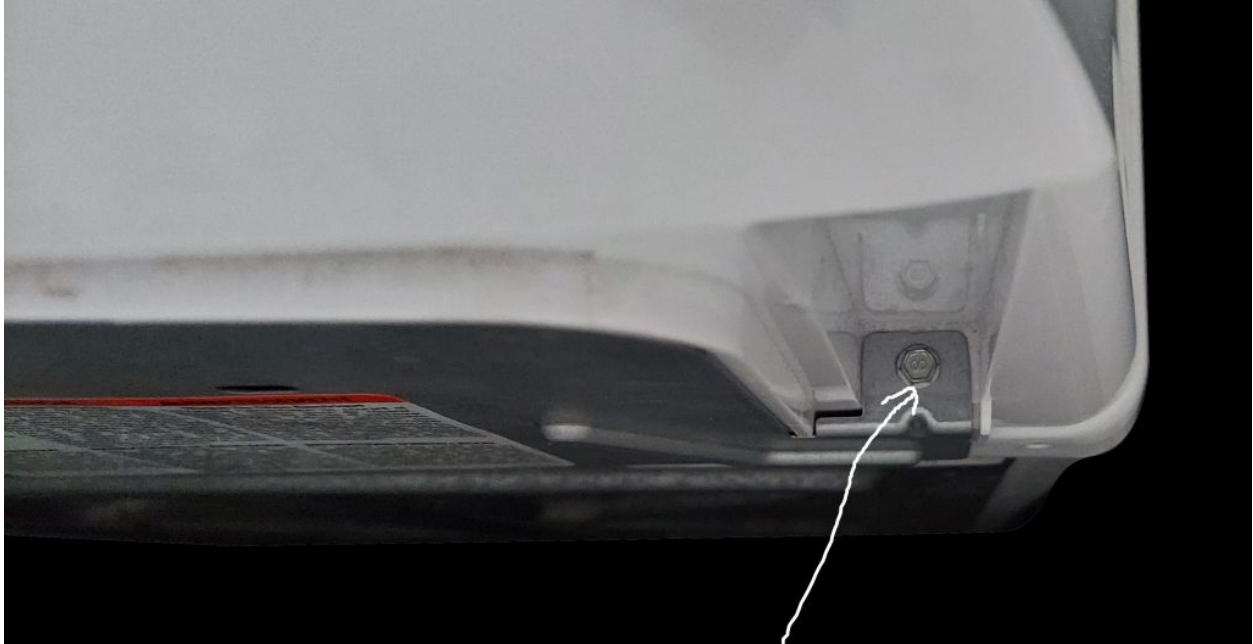
Tools/Materials Required: New Control Board (I purchased online), Hex socket wrench and towel

My Control Board already came pre-configured with the correct Personality. See document: GE 27_Top Load Washer.pdf (download from prioritynetworksolutions.com) to figure which personality is your washing machine. Page 32 of the GE 27 Top Load Washer and read through Consumer Error Mode. Then read page 33 for Personality ID.

Notice: I am not responsible if this solution does work for you.

Removing front unit.





Behind the unit. 1 of 2 screws that needs to be removed in order to gain access to the control board. The other screw is located on the opposite end.

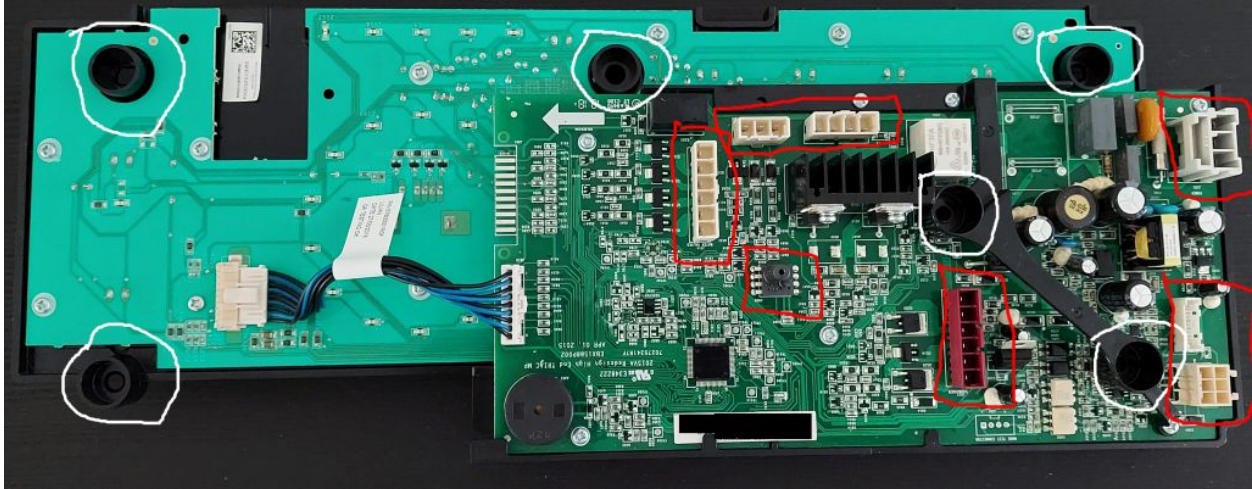
Once the front unit is place onto the towel you can now remove the metal panel by sliding towards the left and then pull towards you.



1. Unplug all connections indicated by the red square/rectangles. Note: Each wired connection is different from each other and can only be connected into its respective female connector. Also notice there is a round male connector located near the center of the board. This is the water pressure sensor. There is a orange hose that connects to this when you open your washing machine front control panel. It may be unplugged once you've flip the board onto the towel. Don't skip Step 3.

2. Remove screws that is indicated by the white circles.

3. You can now replace your control board. Place the screws back in and only connect the wire connectors first. Reinstall the metal panel. To install the water pressure sensor, you'll need to flip control unit away from you and then insert the hose. Now you can seat the front panel onto the top unit. Then secure the front control panel with the screws.



Also don't forget to reattach your knob and plug the power cord back into the outlet. I tested by Selecting Speed Wash.